

MY COMMUNITY HELPER



Time: approximately 30-45 minutes (can be divided into blocks of time)

Instructional Goals:

- The student will use the PebbleGo online database to research a community helper.
- The student will take notes using graphical representations of information.
- The student will be introduced to the term bibliography and the importance of giving credit to a source during research.
- The student will navigate an online database to locate needed information.

Materials/Resources:

- PebbleGo online database
- My Community Helper page (copy for each student)
- Pencils
- Crayons or markers (optional)

Procedures/Lesson Activities:

Focus

1. Tell students that community helpers are people who work in our neighborhood or town to make it a better place to live.
2. As a class, brainstorm different types of community helpers, such as police, firefighters, teachers, etc.

Teach/Model

3. Walk students through the process of accessing the PebbleGo online database.
4. Show students how subject directory searching works by navigating through the subject directory pictures in PebbleGo under Jobs in the Community. Show students keyword searching by using the Search box at the top of the screen. Use community helpers from the class brainstorming list as examples.
5. Explain the difference between the two types of searching. Let students know they can use either search strategy while completing this activity.
6. Demonstrate the read aloud function by clicking on the appropriate button and listening to the text being read aloud.
7. Show students the tabs at the top of the screen that allow them to scroll through the information.
8. Demonstrate how students can use the buttons to watch a video.
9. Show the students how they can look through the different pictures in an article. Explain that they will need to use the pictures to help them with their My Community Helper activity.
10. Show students how to choose a picture and print it out.

Guided Practice



11. Show students the My Community Helper page.
12. Explain that students will research a community helper in PebbleGo. If they already know a community helper they want to research, they may use keyword searching to see if there is an article about that community helper. If they do not know who they want to research, they may use the subject directory to browse through the choices.
13. Explain to students what a bibliography is and why it is important to give credit to their research source. Tell students that the source they are using for this research is called PebbleGo. They will need to write the source title (PebbleGo) in their bibliography when they are finished with their research.
14. Model the process for students.

Independent Practice

15. Have students work independently.
16. When a student has found a community helper in PebbleGo, they will listen to the article using the read aloud feature. They will watch the video, if one is available.
17. The student will choose one picture of their community helper and print it out to use while completing the My Community Helper page.
18. When a student has completed researching their person, give them a My Community Helper page.
19. The student will complete the My Community Helper page by drawing and coloring a picture of the community helper they researched. They will also complete the bibliography. (If students are going to label the tools and special equipment on their My Community Helper page, you may not want them to color the entire picture so their labels remain legible.)
20. Monitor student progress as they work to complete the My Community Helper activity.

Closure

21. Bring students together as a whole group. Ask for volunteers to share with the class some of the information they learned about their community helper.

Extend/Enrich

- Students may label the important tools and special equipment on their My Community Helper page.
- Students may write a sentence or a paragraph about the community helper they researched.
- Students may use a computer program to draw or type information they learned about their community helpers. Print out the information to bind into a class book about community helpers.

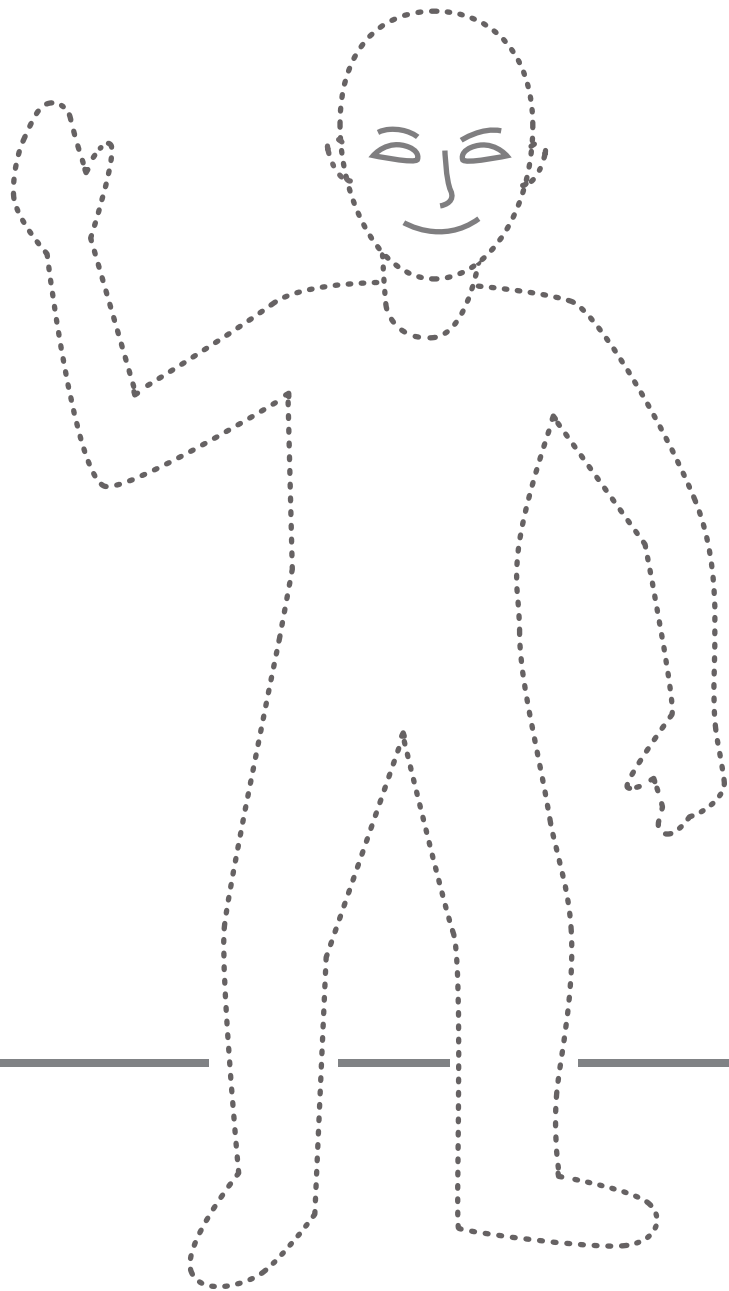
Name: _____



My Community Helper

Choose a community helper to research using PebbleGo. Draw a picture of your community helper below.

Add the community helper's workplace, tools, and other special equipment to your picture.



Bibliography

I found my information in a source called _____.